



Horn in F

# Teague First Concert

## Merrily We Roll Along

8



16

2



25



## This Old Man

33

8

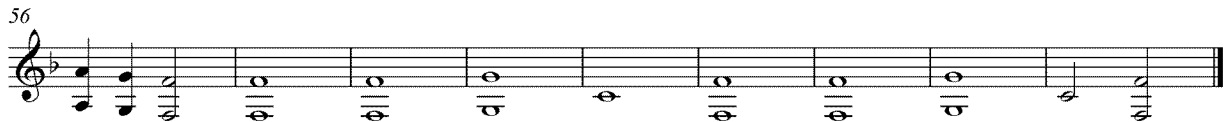


47

2



56



## Ode to Joy

65

8

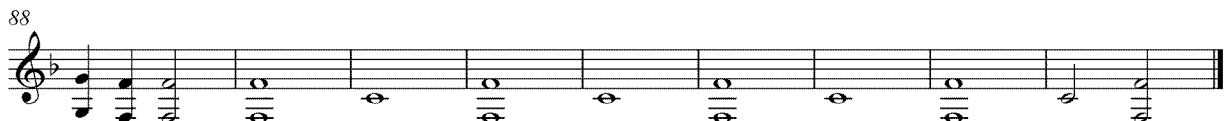


79

4



88



Snare Drum  
Bass Drum  
Cymbals

# Teague First Concert

## Merrily We Roll Along

Musical notation for the piece "Merrily We Roll Along". It consists of three staves of drum notation in 4/4 time. The first staff (measures 8-15) features a snare drum (SD) and bass drum (BD) pattern of eighth notes. The second staff (measures 16-25) features a cymbal (Cym) pattern with two-measure rests. The third staff (measures 26-32) features a cymbal pattern of eighth notes.

## This Old Man

Musical notation for the piece "This Old Man". It consists of three staves of drum notation in 4/4 time. The first staff (measures 33-47) features a snare drum (SD) and bass drum (BD) pattern of eighth notes. The second staff (measures 48-57) features a cymbal (Cym) pattern with two-measure rests. The third staff (measures 58-64) features a cymbal pattern of eighth notes.

## Ode to Joy

Musical notation for the piece "Ode to Joy". It consists of three staves of drum notation in 4/4 time. The first staff (measures 65-79) features a snare drum (SD) and bass drum (BD) pattern of eighth notes. The second staff (measures 80-89) features a cymbal (Cym) pattern with a four-measure rest. The third staff (measures 90-96) features a cymbal pattern of eighth notes.

Clarinet in B $\flat$

# Teague First Concert

## Merrily We Roll Along

Musical notation for the piece "Merrily We Roll Along". It consists of three staves of music in 4/4 time. The first staff contains the first eight measures. The second staff starts at measure 9 and includes an 8-measure rest followed by a 2-measure rest. The third staff starts at measure 26 and concludes the piece with a double bar line.

## This Old Man

Musical notation for the piece "This Old Man". It consists of four staves of music in 4/4 time. The first staff contains measures 33 through 39. The second staff starts at measure 40 and includes an 8-measure rest. The third staff starts at measure 55 and includes a 2-measure rest. The fourth staff starts at measure 61 and concludes the piece with a double bar line.

## Ode to Joy

Musical notation for the piece "Ode to Joy". It consists of three staves of music in 4/4 time. The first staff contains measures 65 through 71. The second staff starts at measure 72 and includes an 8-measure rest followed by a 4-measure rest. The third staff starts at measure 90 and concludes the piece with a double bar line.

Alto Saxophone

# Teague First Concert

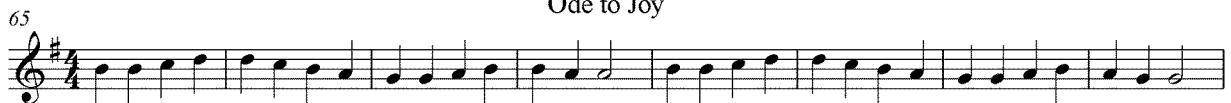
## Merrily We Roll Along



## This Old Man



## Ode to Joy

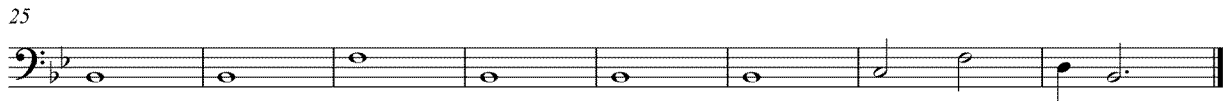
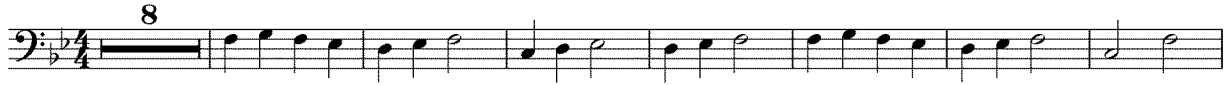




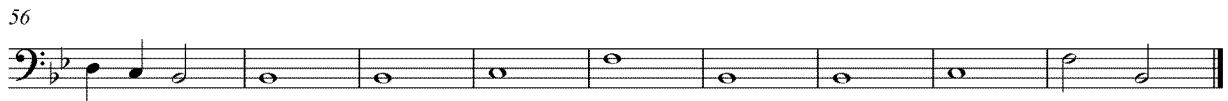
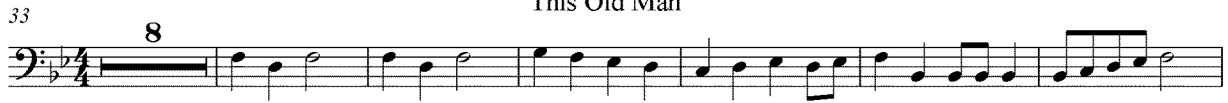
Trombone  
Baritone BC  
Bassoon

# Teague First Concert

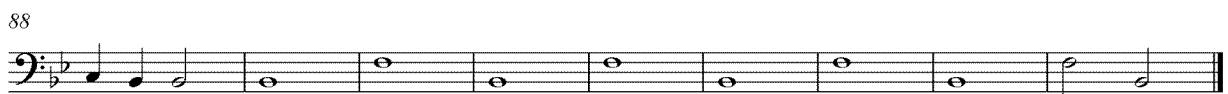
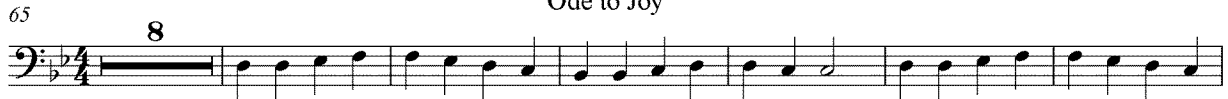
## Merrily We Roll Along



## This Old Man



## Ode to Joy



Trumpet in B $\flat$

# Teague First Concert

## Merrily We Roll Along

Musical notation for the first piece, 'Merrily We Roll Along'. It consists of three staves of music in 4/4 time. The first staff starts at measure 8 and ends with a double bar line. The second staff starts at measure 16 and contains two measures with a '2' above them, indicating a double bar line. The third staff starts at measure 26 and ends with a double bar line.

## This Old Man

Musical notation for the second piece, 'This Old Man'. It consists of four staves of music in 4/4 time. The first staff starts at measure 33 and ends with a double bar line. The second staff starts at measure 47 and contains two measures with a '2' above them, indicating a double bar line. The third staff starts at measure 57 and ends with a double bar line. The fourth staff starts at measure 61 and ends with a double bar line.

## Ode to Joy

Musical notation for the third piece, 'Ode to Joy'. It consists of three staves of music in 4/4 time. The first staff starts at measure 65 and ends with a double bar line. The second staff starts at measure 79 and contains one measure with a '4' above it, indicating a quadruple bar line. The third staff starts at measure 90 and ends with a double bar line.

Tuba

# Teague First Concert

## Merrily We Roll Along

8

16

25

## This Old Man

33

47

56

## Ode to Joy

65

79

88